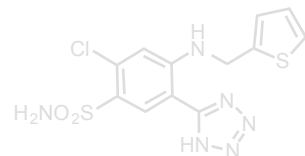
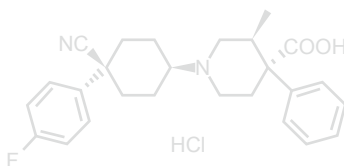
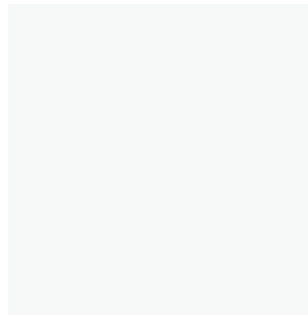


Reaching out to  
meet your needs



## COMPANY PROFILE



 **KATSURA CHEMICAL**

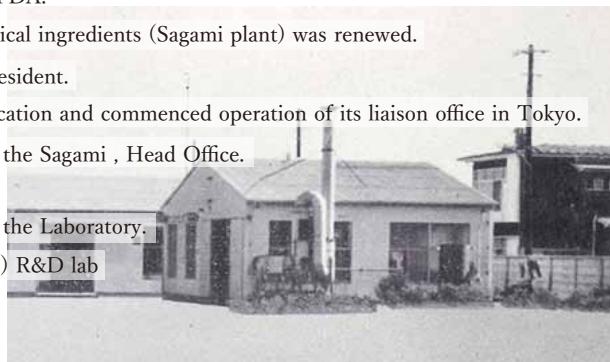
# GREETING

For almost 70 years since our foundation, we have been supplying APIs to various pharmaceutical companies in Japan and internationally thanks to our commitment of “continually embracing new challenges” . In particular, we specialize in supplying APIs which have to meet sophisticated technical demands for complex synthetic routes. We are also a specialist manufacturer of low-volume niche drug substances that are only produced by very few suppliers. We are extremely proud to be involved in supplying APIs for pharmaceuticals and believe in our unique responsibility to perform our work carefully and safely to maintain the highest level of standards. While continuing to embrace this concept, we want to contribute towards the sustainable development of our society and support the livelihood, health and lives of people by supplying high-quality APIs.



## COMPANY HISTORY

- |                        |   |
|------------------------|---|
| <b>March, 1948</b>     | Dr. Kotaro Katsura founded Katsura Chemical Laboratory.   |
| <b>May, 1951</b>       | Dr. Kotaro Katsura founded Katsura Chemical Co.,Ltd.  |
| <b>May, 1963</b>       | The Sagami plant was built in Zama city, Kanagawa prefecture.<br>Production facilities and capacity were expanded to produce active pharmaceutical ingredients. |
| <b>March, 1965</b>     | The Company's capital was increased to 10 million Yen.  |
| <b>August, 1971</b>    | The Company's capital was increased to 20 million Yen.  |
| <b>May, 1980</b>       | No. 1 and 2 Works of the Sagami plant were built. Investment in large-scale production facilities.  |
| <b>September, 1981</b> | Mr. Eijiro Katsura took office as CEO & President of the company.   |
| <b>November, 1986</b>  | The Company's capital was increased to 30 million Yen.  |
| <b>July, 1987</b>      | The second manufacturing facility was refurbished to accommodate production of the GMP active pharmaceutical ingredients.                                       |
| <b>April, 1997</b>     | The Sagami plant acquired certification from FDA.   |
| <b>March, 2000</b>     | The permit to manufacture active pharmaceutical ingredients (Sagami plant) was renewed.   |
| <b>December, 2003</b>  | Mr. Ryotaro Katsura took office as CEO & President.   |
| <b>May, 2004</b>       | The head office moved to the Sagami plant location and commenced operation of its liaison office in Tokyo.  |
| <b>November, 2009</b>  | The attestation of ISO14001 was obtained for the Sagami , Head Office.  |
| <b>September, 2010</b> | Operation of the Laboratory commenced.  |
| <b>November, 2013</b>  | The attestation of ISO14001 was obtained for the Laboratory.  |
| <b>November, 2015</b>  | Acquired new building, removed (Head office,) R&D lab   |



# COMPANY PHILOSOPHY

Providing high-quality pharmaceuticals through high-quality work

## Katsura-Chemical-Quality

At Katsura Chemical we have been creating and manufacturing active pharmaceutical ingredients (APIs) in Japan for more than 60 years. We manufacture and supply APIs in Japan as well as overseas.

“Contributing towards supporting the lives and health of people and promoting sustainable development of our society by supplying high-quality APIs” has been our company philosophy for almost 70 years. As a company that produces and supplies the drug substances Active Pharmaceutical Ingredients (APIs), we should never forget to be aware of the fact that our products are pharmaceuticals that help people who mean a great deal to us. It is reassuring to know that, today, somewhere in this world, medication that incorporates our products cures someone in need. We believe that it is our mission to perform all the different kinds of work bearing this fact in mind.

# COMPANY

**Company name** / Katsura Chemical Co.,Ltd.

**Established in** / May, 1951

**Capital** / 30 million Yen

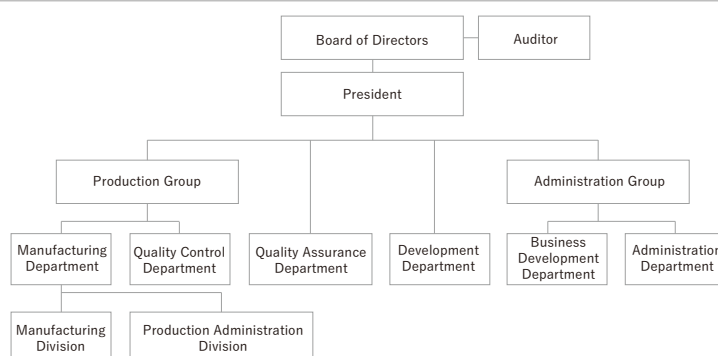
**Operations** / Manufacturing, sales and export/import of active pharmaceutical ingredients and intermediate and chemical products for medical use.

**Location** / Head Office & Factory : 4-15-19 Hibarigaoka, zama-city, Kanagawa, 252-0003, JAPAN  
Tel: +81-46-251-0948 (main phone number)  
Fax: +81-46-256-6071

Tokyo Office : Nihonbashi Sanyu Bldg.6F, 4-12-13,  
Nihonbashihoncho, chuo-ku,  
Tokyo,103-0023, JAPAN



# ORGANIZATIONAL CHART



# OUR COMMITMENT



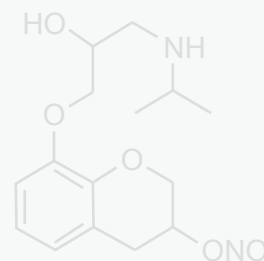
High-quality



High added value



Flexible service



## HIGH QUALITY



Day-to-day production activities are conducted in accordance with various operating procedures managed by the quality department. In our plant, GMP conditions are in full compliance, for example, with the status of the equipment used and plumbing are indicated clearly for easy understanding. Based on our specialist knowledge cultivated from 70 years of our experience on the manufacturing floor, we continually work on improving and manufacturing world-leading high-quality products “made in Japan”. We are proud to offer the world these products by utilising our strengths in the craftsmanship and expertise cultivated as a result of our long-standing experience. As we move forward, we proactively install new equipment and expand our plants to remain committed to supplying high-quality APIs always conscious of them being “made in Japan”.

## HIGH ADDED VALUE

Not only do we manufacture high quality pharmaceutical products, we also supply our products with an excellent standard of service in order to give our clients a high level of added value. In the production department, in addition to fostering GMP, we continue and pass on to the next generation the manufacturing technology which is based on many years of experience and expertise. In the quality control department, we monitor the trend of product quality in full compliance with GMP requirements. In the sales department, we work on promoting a good working relationship and cooperation by offering a comprehensive service which meets the needs of our clients. In this way, each department assumes their own roles and work well together so that we can supply APIs with “Katsura Chemical Quality”, delivering products of the finest quality whilst at the same time providing an excellent standard of service worldwide.





## FLEXIBLE SERVICE



We manufacture APIs as our major products. These also include APIs for investigational drugs as well as raw materials for cosmetics. Our production line is able to deal with a wide range of products that cover a manufacturing volume from small scale of a few hundred grams to a large scale of a few tons.

## PRODUCTS

-  Atropine Sulfate Hydrate
-  Azosemide
-  Levocabastine Hydrochloride
-  Nafamostat Mesilate
-  Propericiazine
-  Zotepine

etc.



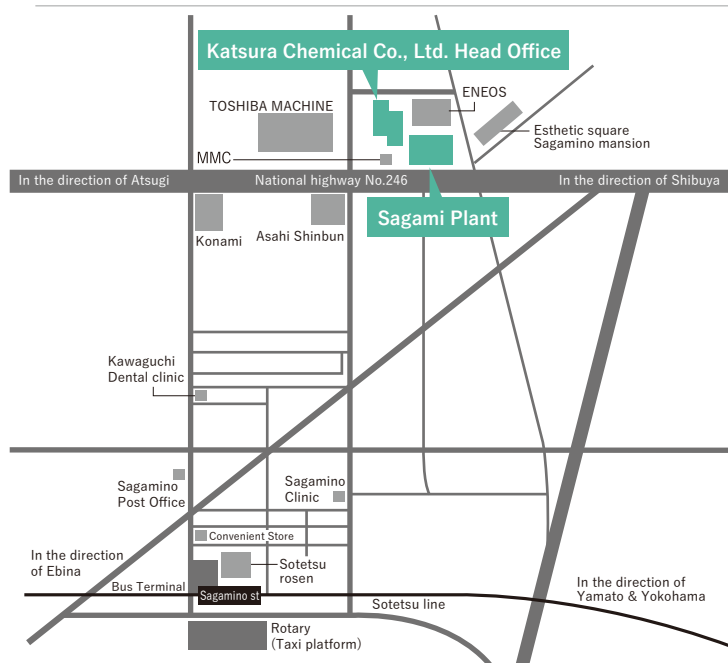
## ENVIRONMENTAL POLICY



Having set the code of conduct – Katsura Chemical Quality, which stands for “supplying high-quality APIs for our clients while providing the highest standards of service” , as a manufacturer of drug substances we contribute to the health of people through medical products.

Furthermore, we recognise the effects which our business activities have on our environment and we therefore we take all possible measures to reduce the environmental impact, prevent pollution, and make a sustainable contribution towards our society.

## ACCESS



### Head Office & Plant

4-15-19 Hibarigaoka, zama-city,  
Kanagawa, 252-0003, JAPAN

Tel: +81-46-251-0948 (main phone number)

Fax: +81-46-256-6071

### Tokyo Office

Nihonbashi Sanyu Bldg.6F, 4-12-13,  
Nihonbashihoncho, chuo-ku, Tokyo,  
103-0023, JAPAN



